

---

PLEASE RETAIN



# Argon Arranmore/Bailey



## **INSTALLATION AND OPERATING INSTRUCTIONS**

*The complete installation must be done in accordance with current Standards and Local Codes. The instructions in this manual must be followed to ensure safe operation of the appliance. It should be noted that the requirements and this publication may be superseded during the life of the stove.*

AFFIX SERIAL  
NO. LABEL

*The serial number above must be retained and will be required when registering the product guarantee or making a warranty claim.*

---

---

## TABLE OF CONTENTS

	PAGE NO.
1. Stanley Appliance Warranty . . . . .	3
2. Important Operation/ Maintenance Notes . . . . .	4
3. Installation & Operating Instructions . . . . .	5
4. Locating the Unit . . . . .	5
5. Unpacking & Testing . . . . .	5
6. Installation - Existing Fireplace . . . . .	5
7. Product Dimensions . . . . .	6
8. Technical Data . . . . .	6
9. Commissioning & Handover . . . . .	6
10. Operation . . . . .	7
11. Manual Operation . . . . .	7
12. Remote Control Operation . . . . .	8
13. Heater Operation . . . . .	8
14. Flame Operation . . . . .	8
15. Setting the Time & Day (24 Hour Clock) . . . . .	9
16. Setting the Programmer . . . . .	9
17. Cleaning . . . . .	10
19. Battery Replacement - Remote Control . . . . .	10
20. Exploded View . . . . .	11
21. Wiring Diagram . . . . .	12



## STANLEY APPLIANCE WARRANTY

### CONDITIONS OF WARRANTY

Your Stanley Appliance is guaranteed against any part that fails (under normal operating conditions) for a two year period from the date of installation of the appliance. If the unit is not installed within six months of date of purchase, the warranty will commence six months from the date of purchase.

All warranty claims must be reported to the Waterford Stanley Service Department and must be submitted with the product serial number (located on the front of this manual), date of purchase, proof of purchase (if requested) and details of the specific nature of the problem.

The warranty is given only to the original consumer/purchaser only and is non-transferable. The appliance must be installed by a suitable qualified person and installed as per the requirements of the manual. Failure to comply with the Installation Requirements or Building Regulations will void your warranty. Waterford Stanley reserve the right to replace any part due to manufacturing defect that fails within the warranty period under the terms of the warranty. The unit must be used for normal domestic purposes only and in accordance with manufacturer's operation instructions.

### LIMITS OF LIABILITY

The warranty does not cover:

- \* Bulbs and Batteries.
- \* Special, incidental or consequential damages, injury to persons or Property, or any other consequential loss.
- \* Any issue caused by negligence, misuse, abuse or circumstances beyond Waterford Stanley's control.
- \* Any issue with wear and tear, modification, alteration, or servicing by anyone other than an authorized service engineer.
- \* Damage resulting from installation & usage where the appliance has not been installed or used in accordance with the installation or operation instructions or if the installation does not conform to local building, fire & safety regulations.
- \* Damage caused to the unit while in transit.
- \* Damage caused by storing the unit in a damp, unheated environment.
- \* Aesthetic damage & missing parts on units purchased off display.
- \* Removal & re-installation costs.

**Note:** Adequate clearance must be maintained around the appliance to ensure the ease of part removal in the possible event of their damage/failure. Waterford Stanley are not responsible for any costs incurred in the removal of items installed in the vicinity of the appliance that have to be moved to facilitate a part replacement.

---

## **IMPORTANT OPERATION / MAINTENANCE NOTES**

Now that your Stanley Appliance is installed and no doubt you are looking forward to the many comforts it will provide, we would like to give you some tips on how to get the best results from your unit.

1. Carefully read all instructions before using this unit.
2. The unit is hot when in use. To avoid burns, do not let bare skin touch hot surfaces. The grill at the bottom of the unit becomes hot during heater operation.
3. Keep combustible materials, such as furniture, pillows, bedding, papers, clothes and curtains at least 3 feet (0.9m) from the front of the unit.
4. Extreme caution is necessary when any heater is used by or near children or invalids and whenever the unit is left operating and unattended.
5. Always unplug the unit when not in use.
6. Do not operate this unit with a damaged cord or plug, or if the unit has malfunctioned, or if the unit has been dropped or damaged in any manner.
7. Do not use the unit for other than its intended use. Do not use outdoors.
8. This unit is not intended for use in bathrooms, laundry areas and similar indoor locations. Never locate this unit where it may fall into a bathtub or other water container.
9. Do not install the unit on a surface which may restrict air circulation beneath the unit.
10. Do not run the mains cord under carpeting. Do not cover the cord with throw rugs, runners or the like. Arrange the cord away from traffic area and where it will not be tripped over.
11. To disconnect the unit turn controls to off, then remove plug from the outlet.
12. Do not insert or allow foreign objects to enter any ventilation or exhaust opening as this may cause an electric shock or fire, or damage the heater.
13. To prevent a possible fire, do not block the air intake or exhaust in any manner. Do not use on soft surfaces, like a carpet, where openings may become blocked.
14. All electrical heaters have hot and arcing or sparking parts inside. Do not use it in areas where gasoline, paint, or flammable liquids are used or stored or where the unit will be exposed to flammable vapours.
15. Do not modify this unit. Use it only as described in this manual. Any other use not recommended by the manufacturer may cause fire, electric shock or injury to persons.
16. Avoid the use of an extension cord because the extension cord may overheat and cause a risk of fire.
17. Do not strike the glass.
18. Always use a certified electrician should new circuits or outlets be required.
19. Always use properly grounded, fused and polarised outlets. **DO NOT** cut off the plug and hardwire directly into the mains or via a fused fixed spur.
20. Always use ground fault protection where required by electrical code.
21. Always disconnect power before performing any cleaning, maintenance or relocation of the unit.
22. When transporting or storing the unit and mains cord, keep in a dry place, free from excessive vibration and store so as to avoid damage.
23. To prevent possible fire, do not burn wood or other materials in this heater.
24. **The unit may emit a slight, harmless odour and smoke when first used. This odour and smoke is normal and it is caused by the initial heating of internal heater parts and will not occur again.**
25. Do not use the unit in small rooms when they are occupied by persons not capable of leaving the room on their own, unless constant supervision is provided.
26. Children of less than 3 years should be kept away from the unit unless constantly supervised.
27. Children aged from 3 years and less than 8 years shall only switch on/off the unit provided that it has been placed or installed in its intended normal operating position and they have been given supervision or instruction concerning the use of the unit in a safe way and understand the hazards involved. Children aged from 3 years and less than 8 years shall not plug in, regulate and clean the appliance or perform user maintenance.
28. This unit can be used by children aged from 8 years & above and persons with reduced physical, sensory or mental capabilities or lack of experience & knowledge if they have been given supervision or instruction concerning the use of the unit in a safe way and understand the hazards involved. Children shall not play with the unit. Cleaning and user maintenance shall not be made by children without supervision.

## INSTALLATION & OPERATING INSTRUCTIONS

### LOCATING THE UNIT

Before commencing installation of the unit consideration should be given to the following:

1. Position in the area to be heated, central locations are usually best.
2. Allowances for proper clearances to combustibles (see Fig 1) .
3. Allowances for proper clearances for maintenance work (see Fig 1).
4. Consider a location where the glass screen will not be exposed to direct sunlight from windows and doors.
5. Select a location that is not prone to moisture.
6. A 13 amp, 240 Volt socket capable of accomodating a maximum load of 2050 watts must be available close to the appliance. The socket must be accessible at all times and must not be placed directly behind the unit.

**DO NOT INSTALL THE APPLIANCE DIRECTLY ON CARPET OR SIMILIAR SURFACES WHICH MAY RESTRICT AIR CIRCULATION.**

### UNPACKING & TESTING

Carefully remove the unit from the packaging and prior to installing the unit, test the unit by plugging the power supply into a conventiently located 13 amp grounded socket.

Your Stanley Appliance is supplied with the following items:

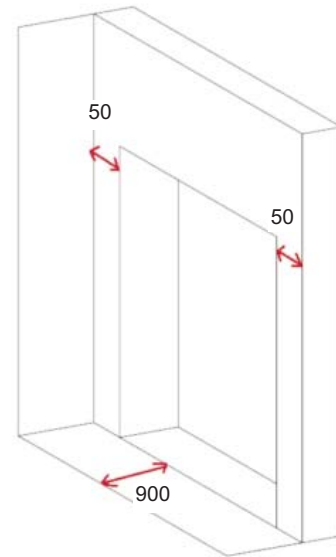
- Remote Control (CR2025 Battery included)

### INSTALLATION - EXISTING FIREPLACE

**NOTE:** This appliance must be installed in an opening with minimum dimensions of 370mm (14 1/2") wide, 570mm (22 1/2") high & 110mm (4 1/3") deep.

1. Select a location as per the requirements in the *Locating the Unit* section.
2. Seal all drafts and vents with a non-fibrous insulation material to prevent any chimney debris from falling onto the fireplace.

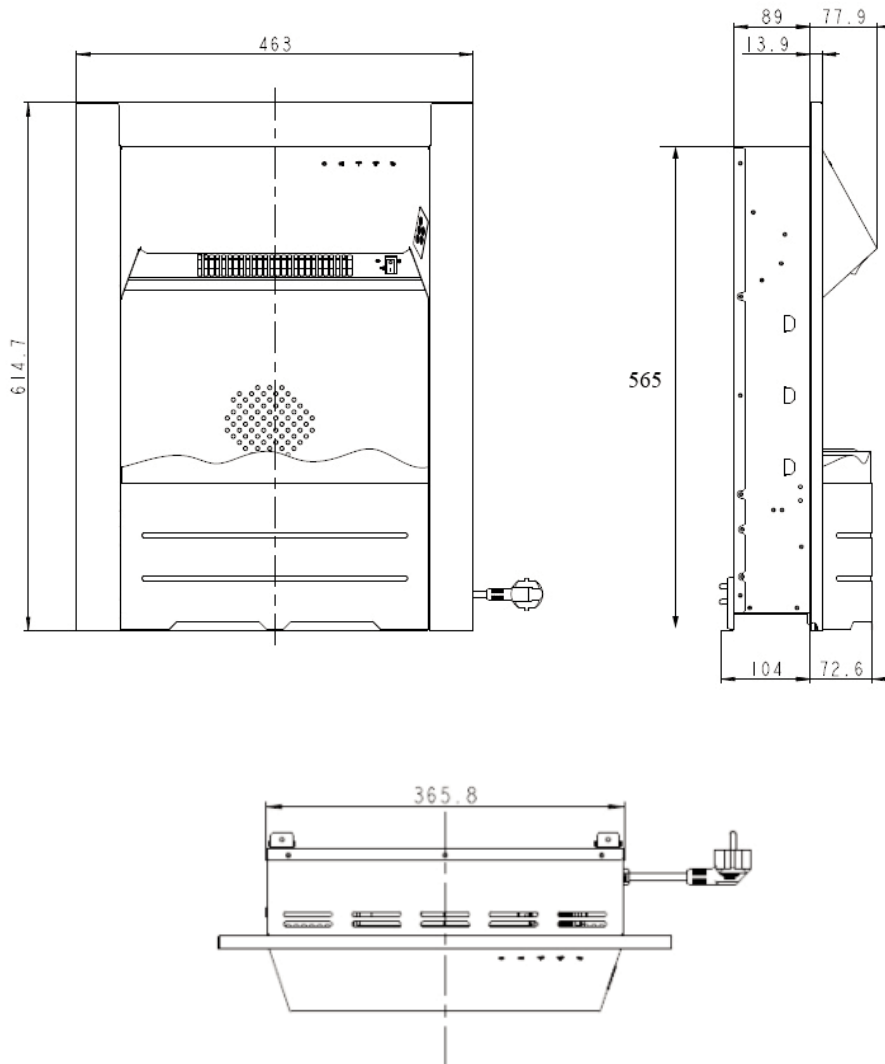
Fig.1



3. Cap the top of the chimney flue to prevent rain from entering.
4. Install the 13 amp, 240 Volt socket into the existing fireplace. If this is not possible, the mains cord can also be run along the front of the hearth to an outlet near the fireplace provided that the cord does not restrict the appliance from being placed into the fire place opening.
5. Ensure that the ON/OFF switch on the appliance is turned to OFF and plug the mains cord into the socket.
6. Push the appliance into the fireplace and center within the opening.

## PRODUCT DIMENSIONS

Fig 2



**Note:** Dimensions stated are in millimetres unless otherwise stated and may be subject to a slight +/- variation.

### TECHNICAL DATA

Voltage	240V AC 50-60 Hz
Max Power	2050W
No Heater	25W
Motor Heater	19W
Gross Weight (kgs):	15 Kg
Efficiency Rating:	A

### COMMISSIONING AND HANDOVER

On completion of the installation:

- \* Ensure that the operating instructions for the unit are left with the customer.
- \* Ensure to advise the customer on the correct use of the appliance and how to isolate the unit when required.
- \* Advise the user what to do should smoke or fumes be emitted from the unit.

## OPERATION

The unit can be operated either by the switches located on the RHS of the unit or using the remote control supplied. For the unit to operate, the ON/OFF switch, located on the underside of the canopy must be switched to the "I" position.

**NOTE:** The unit may emit a slight, harmless odour and smoke when first used. This odour & smoke is normal and it is caused by the internal heating of the internal heater parts and will not occur again.

### MANUAL OPERATION

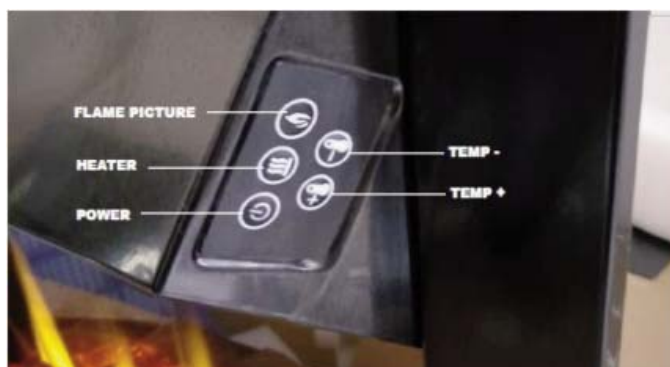


Fig 3

1. Press the Power button to start the flame picture and the current room temperature will be shown on the display.
2. Adjust the temperature to the desired setting (15° to 30°C Range) using the Temp + & Temp - buttons - See Fig 3.

**NOTE:** The set temperature must be above the room temperature for the heating function to operate.

3. Press the Heater button to select Full Heat (2kW) and H2 with the red flame symbol will be displayed - see Fig 4.
4. Press the Heater button again to select Half Heat (1kW) and H1 with the orange flame symbol will be displayed - see Fig 5.

On either heat setting, the heat function will turn off when the room temperature reaches the set temperature. The heat function will automatically restart when the room temperature drops 3°C below the set temperature.

5. Press the Heater button again to turn off the Heater function.

**NOTE:** The fan will run for approximately 30 seconds after the Heating function is turned off to remove any residual heat for the unit to protect the control components from any potential overheating.



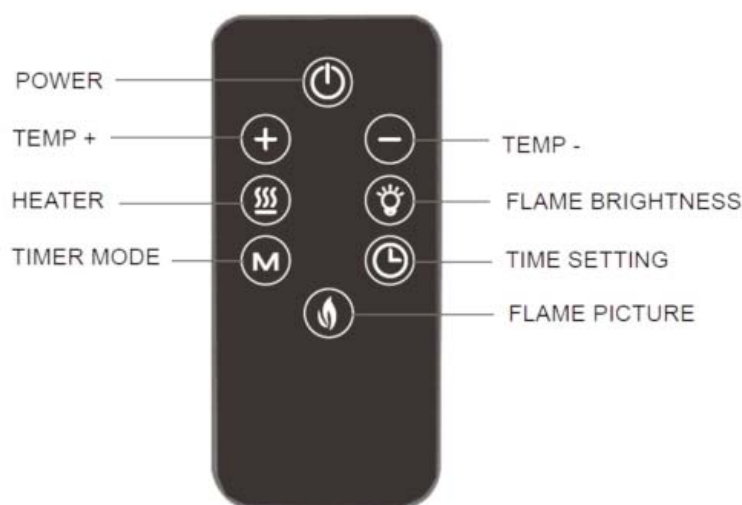
Fig 4



Fig 5



## REMOTE CONTROL OPERATION



### Heater Operation

1. Press the Power button to start the flame picture and the current room temperature will be shown on the display.
2. Adjust the temperature to the desired setting (15° to 30°C Range) using the Temp + & Temp - buttons - See Fig 3.

**NOTE:** The set temperature must be above the room temperature for the heating function to operate.

3. Press the Heater button to select Full Heat (2kW) and H2 with the red flame symbol will be displayed - see Fig 4.
4. Press the Heater button again to select Half Heat (1kW) and H1 with the orange flame symbol will be displayed - see Fig 5.

On either heat setting, the heat function will turn off when the room temperature reaches the set temperature. The heat function will automatically restart when the room temperature drops 3°C below the set temperature.

5. Press the Heater button again to turn off the Heater function.

**NOTE:** The fan will run for approximately 30 seconds after the Heating function is turned off to remove any residual heat for the unit to protect the control components from any potential overheating.

### Flame Operation

Press the Power button to start the flame picture and the current room temperature will be shown on the display. By pressing the Flame Picture button, you can select from four different Flame Picture options:

- No Flame Picture
- FE Flame & Logs
- E Logs Only
- F- Flame Only

**NOTE:** When one of these modes has been selected, this mode will be the default mode when the unit is turned on by manual or remote operation.

The brightness setting of the Flame Picture can also be adjusted by pressing the Brightness button to select from the following levels:

- H - Maximum Setting
- C - Intermediate Setting
- L - Minimum Setting



### Setting the Time & Day (24 Hour Clock)

1. Press the Power button to turn the unit on.
2. Press & hold the Time Setting button for two seconds to display the time & day - see Fig 6 ( no numbers shown as time not set).
3. Press the Time Setting button & the day setting will flash - see Fig 7.
4. Adjust the day setting using the Temp + & Temp - buttons.
5. Press the Time Setting button & the hour setting will flash. Adjust the hour setting using the Temp + & Temp - buttons.
6. Press the Time Setting button & the minute setting will flash. Adjust the minute setting using the Temp + & Temp - buttons.
7. Press the Time Setting button to set the time & exit the time/date set-up.

### Setting the Timer

The Timer allows for two ON/OFF periods (M1/M3) for each day of the week and the timer can be set using the following procedure:

1. Press the Power button to turn the unit on.
2. Press & hold the Timer Mode button for two seconds to enter the timer settings. The settings for the 1st ON/OFF period (M1) for Monday will be shown with the 1st ON time & hour setting flashing - see Fig 8.
3. Adjust the hour setting using the Temp + & Temp - buttons and press the Time Setting button to select the minute setting. With the minute setting flashing, adjust the minute setting using the Temp + & Temp - buttons.
4. Press the Time Setting button & the display will move to the 1st OFF time setting - see Fig 9.
5. Repeat steps 2 & 3 to set the 1st OFF time.
6. Press the Time Setting button & the display will move to the 2nd ON/OFF period (M3) with the 2nd ON time setting displayed.
7. Repeat steps 2 to 5 to set the 2nd ON/OFF period.
8. Press the Time Setting button & the display will move to the 1st ON/OFF period (M1) for Tuesday with the 1st ON time setting displayed.
9. Repeat steps 2 to 8 for Tuesday's settings and repeat this process for Wednesday to Sunday's settings.
10. Having confirmed Sunday's settings, exit the timer settings by not using the remote for 10 seconds and the unit will default into normal operating mode. To activate the timer settings, press the Timer Mode button until the timer symbol is displayed on the screen - see Fig 11.

Fig 6



Fig 7



Fig 8



Fig 9

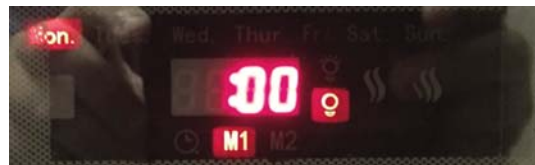


Fig 10



Fig 11



**NOTE:** The time & day must be set before the Timer Mode can be activated.

The unit can still be operated normally when in the timer mode using the Heater function.

---

## CLEANING

**NOTE:** Allow the product to completely cool before handling or cleaning it.

1. Switch off and unplug from the power supply before cleaning.
2. Using a soft, moist cloth, with or without a mild soap solution, carefully clean the exterior surface of the product.
3. Do not allow water or other liquids to run into the interior of the product, as this could create a fire and/or electrical hazard.
4. We also recommend the periodic cleaning of this appliance by lightly running a vacuum cleaner nozzle over the guards to remove any dust or dirt that may have accumulated inside or on the unit.

**CAUTION:** Do not use harsh detergents, chemical cleaners or solvents as they may damage the surface finish of the plastic components.

## BATTERY REPLACEMENT - REMOTE CONTROL

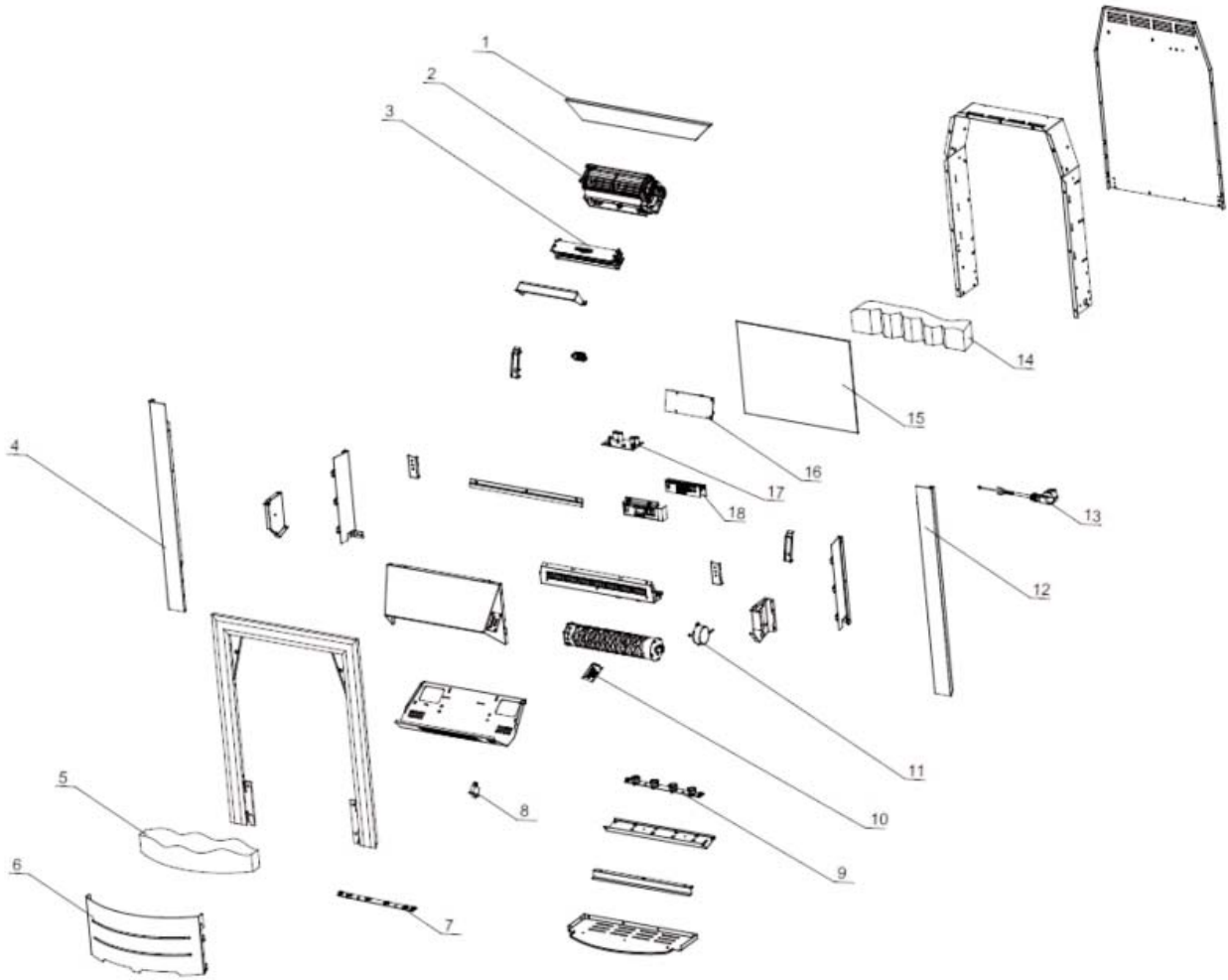
The Remote Control requires one CR2025 Battery which is fitted by pushing in the tab on the battery casing to allow the casing to be removed from the base of the remote - see Fig 12.

Fig 12



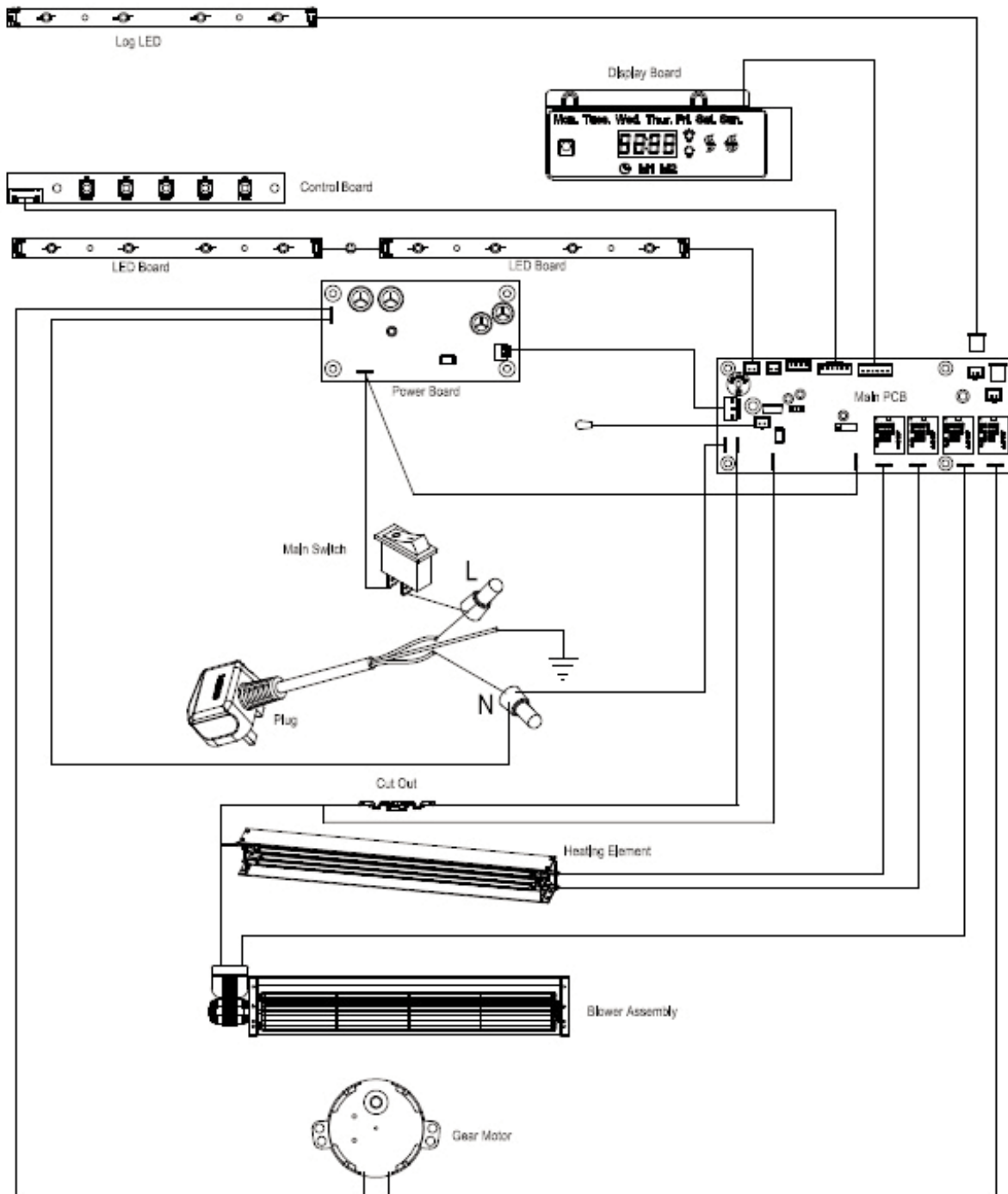
PUSH TAB TO THE RIGHT TO ALLOW BATTERY CASING TO BE REMOVED.

## EXPLODED VIEW



NO	DESCRIPTION	PART NUMBER
1	TRIM TOP	F01347AXX
2	BLOWER ASSEMBLY	G00530AXX
3	HEATING ELEMENT	G00531AXX
4	TRIM LH	F01348AXX
5	FRONT LOG	V01083AXX
6	FRET	F01349AXX
7	LOG LED	G00532AXX
8	MAIN SWITCH	G00533AXX
9	LED BOARD	G00534AXX
10	CONTROL BOARD	G00535AXX
11	GEAR MOTOR	G00536AXX
12	TRIM RH	F01350AXX
13	PLUG	G00537AXX
14	BACK LOG	V01084AXX
15	MIRROR	T00108AXX
16	MAIN PCB	G00538AXX
17	POWER BOARD	G00539AXX
18	DISPLAY BOARD	G00540AXX

## WIRING DIAGRAM



Supplied by Waterford Stanley Ltd.,  
 Unit 401-403, IDA Industrial Estate, Cork Road,  
 Waterford, Ireland.  
 Tel: (051) 302300 Fax (051) 302315

